



Kasco®

MOVING WATER FORWARD, SINCE 1968

2022 PRICE CATALOG

60HZ RETAIL

kascomarine.com

Factory Authorized Dealer

Duddeck's Property Maintenance, LLC
2272 3rd Street North
North Saint Paul, MN 55109
651-300-0132
dpm.duddeck@gmail.com

Fountains | Surface Aerators | Diffused Aeration | Circulators | Mixers | De-icers | Bacteria

MOVING WATER FORWARD

At Kasco, we help people realize the full potential of the water in their world. Our products are the most efficient and effective solutions for improving, protecting and beautifying water.

UNMATCHED CUSTOMER SERVICE

Superior customer service is in our DNA. From design and development to delivery and support, we provide an unwavering commitment to our customers.

LEADING SINCE 1968

Kasco solutions set the bar for the industry. For more than 50 years, our team of biologists, engineers and water quality experts have brought unrivaled knowledge of every application.

HIGHEST PERFORMING PRODUCTS

Every Kasco product is designed and tested to deliver exceptional results. Through continuous improvement and innovation, our products exceed expectations in performance and longevity.



A sunset over a body of water. The sun is low on the horizon, creating a bright orange and yellow glow. A large splash of water is in the foreground, with the sun's light reflecting off the water droplets. The sky is a mix of blue and orange. In the background, there are trees and a small boat on the water.

“Please allow me to take a moment of your time to thank the fine people at Kasco Marine for outstanding customer support and service. From the time I first walked in the door until our units were completed and back home, everything about the entire process was nothing short of professional. It’s that kind of professionalism and customer service that makes your customers want to continue doing business with you.”

- Jim



TABLE OF CONTENTS

Moving Water Forward.....	2
Why Kasco.....	3
Table of Contents.....	5
New Products for 2022	6
Fountains	
J Series	8
J Series Premium Nozzles (NEW for 3/4 & 1HP).....	16
VFX Series	18
WaterGlow Lighting	21
RGBW LED - NEW	22
RGB LED	24
Composite LED	25
Stainless Steel LED.....	26
Universal Lighting For Non-Kasco Fountains.....	27
Lighting Selection Guide	27
AquatiClear™ Circulators - NEW	28
Surface Aerators	32
Robust-Aire™ Dual Loop Diffused Aeration Systems	37
Teich-Aire Compressors.....	41
Solar.....	42
Macro-Zyme™ Beneficial Bacteria	46
Unit Mounting Options	47
Control Panels.....	48
Accessories	49
De-icers	50
CertiSafe™ Tank Mixers.....	52
Warranty	54
MAP, Product Return, Repair & Shipping.....	55
Distributor Tools	55

FROM THE FACTORY

The Kasco team is extremely excited to continue our mission of Moving Water Forward in 2022. With the support of our valued distributors and loyal customers, we have successfully navigated a challenging 2021.

Together, we have weathered supply chain interruptions and every other hurdle the pandemic has thrown at us. As our production team built and shipped more equipment than any other year in our history, our engineering team was hard at work developing the next generation of products.

Our entire staff is preparing diligently to meet your needs throughout 2022 with process improvements, facility expansions, product innovations, and enhanced training content for installers and end users.

Kasco is proud to be your partner in Moving Water Forward, and we remain committed to offering you the absolute best in quality products, industry expertise, and outstanding customer service. We realize you have choices, thank you for choosing Kasco and trusting us to help achieve your goals!

*Sincerely,
Your Partners at Kasco*

NEW FOR 2022

AQUATICLEAR™ BY KASCO

THE FIRST & ONLY CLOG-FREE CIRCULATOR

Create clean and beautiful waterways with AquatiClear™ by Kasco, a circulator reimagined. Designed with a clog-resistant, revolutionary prop guard, AquatiClear quickly and easily clears water near docks, boathouses, canals and other in-water property of floating weeds, algae and other debris.

AquatiClear packages that include a Universal Mount Kit now come with the newly designed Simple Swivel bracket (patent pending), allowing easy unit rotation to influence the flow of water to a desired area.

Learn more about AquatiClear and why it is the best choice to manage waterfront property on page 28.





RGBW LIGHTING

A BRILLIANT COLOR EXPERIENCE

Elevate your fountain display with exceptionally vibrant colors using Kasco's new RGBW LED Lighting Systems. With 36 pre-programmed color settings, Wi-Fi connectivity and optimized color distribution, these light kits offer brilliant illumination to any pattern. Learn more on page 22.

PREMIUM NOZZLES FOR 3/4 & 1HP J SERIES FOUNTAINS

EVEN MORE BEAUTIFUL DISPLAY OPTIONS

Premium Nozzles are now available for 3/4 and 1HP J Series Fountains, expanding the variety of display options even further. Purchased separately, these crisp and defined patterns deliver an elegant atmosphere to any water space. Learn more about these newly available nozzles on page 16.



MIGHTY OAK



MAGNOLIA



MAHOGANY



MADRONE

Impressive heights
and widths



Clean and defined
patterns



Energy-efficient,
high-performance flow



Twist-and-lock nozzles for
easy pattern changes



Snap-on light clips for easy
light fixture installations



1-piece tapered float for
simple assembly and sleek
look at the surface





J SERIES

Elegant Fountain Displays

Kasco J Series Fountains offer dramatic, aesthetically pleasing displays at the best value on the market. Designed with both beauty and function in mind, each package includes multiple twist-and-lock nozzles - at no extra charge - allowing you to choose from attention - demanding geysers to elegant 3 - tier displays.

Packages include motor unit, float, bottom screen, mooring ropes, power cord, display nozzles, and control panel with human-rated GFCI protection.

Available in 3/4 - 7-1/2HP sizes and single and three phase options to fit virtually any application.

Complete packages are ETL Listed to UL and CSA standards.



3/4HP & 1HP

J SERIES FOUNTAINS

- **NEW** - Premium Nozzles now available (purchased separately)
- 120V and 208-240V, single phase
- 3/4HP operates in as little as 17.5 in. of water
- 1HP operates in as little as 19 in. of water
- Control panels feature human-rated GFCI protection



5 PATTERNS INCLUDED



PREMIUM NOZZLES NOW AVAILABLE (pg. 16-17)



OPTIONAL LIGHTING PACKAGES (pg. 21-27)



2 YEAR WARRANTY

3/4HP PACKAGES

CORD LENGTH	50 FT	100 FT	150 FT	200 FT	250 FT	300 FT	400 FT	500 FT
120V PACKAGES								
PART #	3400JF050	3400JF100	3400JF150	3400JF200	-	-	-	-
MSRP	\$1,829	\$1,995	\$2,515	\$2,748	-	-	-	-
208-240V PACKAGES								
PART #	3400HJF050	3400HJF100	3400HJF150	3400HJF200	3400HJF250	3400HJF300	3400HJF400	3400HJF500
MSRP	\$3,152	\$3,274	\$3,851	\$4,035	\$4,117	\$4,212	\$4,653	Inquire

1HP PACKAGES

CORD LENGTH	50 FT	100 FT	150 FT	200 FT	250 FT	300 FT	400 FT	500 FT
120V PACKAGES								
PART #	4400JF050	4400JF100	4400JF150	4400JF200	-	-	-	-
MSRP	\$2,216	\$2,801	\$3,416	\$3,749	-	-	-	-
208-240V PACKAGES								
PART #	4400HJF050	4400HJF100	4400HJF150	4400HJF200	4400HJF250	4400HJF300	4400HJF400	4400HJF500
MSRP	\$3,646	\$3,772	\$4,407	\$4,608	\$4,810	\$4,910	\$5,015	Inquire

Product Notes:

1. Prices in bold have quick disconnect installed on power cords.
2. 3/4HP and 1HP, 120V options include C-25 control panel.
3. 3/4HP and 1HP, 208-240V options include C-85 control panel.
4. Control panels allow timing and lights to be managed from shore. See pg. 48 for more details.



Premium Nozzles are now available for even more display options (pg. 16-17).



CYPRESS

3/4HP - 7 FT. H X 17 FT. W
1HP - 9 FT. H X 28 FT. W



SEQUOIA

3/4HP - 13 FT. H X 8 FT. W
1HP - 18 FT. H X 11 FT. W



LINDEN

3/4HP - 9 FT. H X 29 FT. W
1HP - 12 FT. H X 31 FT. W



WILLOW

3/4HP - 6.5 FT. H X 21 FT. W
1HP - 9 FT. H X 31 FT. W



BIRCH

3/4HP - 7 FT. H X 5 FT. W
1HP - 11 FT. H X 8 FT. W

2HP & 3HP

J SERIES FOUNTAINS

- 208-240V, single and three phase options
- 2HP operates in as little as 20 in. of water
- 3HP operates in as little as 24 in. of water
- Control panels feature human-rated GFCI protection



5 PATTERNS INCLUDED



PREMIUM NOZZLES AVAILABLE SEPARATELY (pg. 16-17)



OPTIONAL LIGHTING PACKAGES (pg. 21-27)



3 YEAR WARRANTY ON 2HP UNITS



5 YEAR WARRANTY ON 3HP UNITS

OPTIONAL EXTENDED WARRANTY (pg. 54)

2HP PACKAGES

CORD LENGTH	50 FT	100 FT	150 FT	200 FT	250 FT	300 FT	400 FT	500 FT
SINGLE PHASE								
PART #	8400JF050	8400JF100	8400JF150	8400JF200	8400JF250	8400JF300	8400JF400	8400JF500
MSRP	\$5,487	\$5,883	\$6,002	\$6,165	\$6,355	\$7,235	\$10,109	Inquire
THREE PHASE								
PART #	2.3JF050	2.3JF100	2.3JF150	2.3JF200	2.3JF250	2.3JF300	2.3JF400	2.3JF500
MSRP	\$8,387	\$8,617	\$8,901	\$9,149	\$9,731	\$10,192	\$11,738	Inquire

3HP PACKAGES

CORD LENGTH	50 FT	100 FT	150 FT	200 FT	250 FT	300 FT	400 FT	500 FT
SINGLE PHASE								
PART #	3.1JF050	3.1JF100	3.1JF150	3.1JF200	3.1JF250	3.1JF300	3.1JF400	3.1JF500
MSRP	\$6,121	\$6,546	\$6,700	\$7,327	\$7,843	\$8,159	\$10,544	Inquire
THREE PHASE								
PART #	3.3JF050	3.3JF100	3.3JF150	3.3JF200	3.3JF250	3.3JF300	3.3JF400	3.3JF500
MSRP	\$8,709	\$8,939	\$9,223	\$9,735	\$10,053	\$11,220	\$12,064	Inquire

Product Notes:

1. Prices in bold have quick disconnect installed on power cords.
2. 2HP, single phase options include C-85 control panel. 3HP, single phase options include C-95 control panel.
3. 2 and 3HP, three phase options include CF-3235 control panel.
4. Control panels allow timing and lights to be managed from shore. See pg. 48 for more details.
5. Three phase, 460-480V available for special order in approved locations only. Contact Kasco for details.



Enjoy your fountain at night with easy-to-install lighting systems (pg. 21-27).



BALSAM

2HP - 14 FT. H X 32 FT. W

3HP - 19 FT. H X 34 FT. W



SPRUCE

2HP - 21 FT. H X 10 FT. W

3HP - 26 FT. H X 12 FT. W



LINDEN

2HP - 15.5 FT. H X 38 FT. W

3HP - 20.5 FT. H X 38 FT. W



REDWOOD

2HP - 22 FT. H X 6 FT. W

3HP - 27 FT. H X 6 FT. W



BIRCH

2HP - 11 FT. H X 10 FT. W

3HP - 16 FT. H X 12 FT. W


5HP & 7-1/2HP

J SERIES FOUNTAINS



- 208-240V
- 5HP available as single and three phase, 7-1/2HP available only as three phase
- 5HP operates in as little as 26 in. of water
- 7-1/2HP operates in as little as 28 in. of water
- Control panels feature human-rated GFCI protection

5 PATTERNS INCLUDED

 PREMIUM NOZZLES AVAILABLE SEPARATELY (pg. 16-17)

 OPTIONAL LIGHTING PACKAGES (pg. 21-27)

 **5** YEAR WARRANTY

5HP PACKAGES

CORD LENGTH	100 FT	150 FT	200 FT	250 FT	300 FT	400 FT	500 FT
SINGLE PHASE							
PART #	5.1JF100	5.1JF150	5.1JF200	5.1JF250	5.1JF300	5.1JF400	5.1JF500
MSRP	\$7,659	\$8,555	\$8,682	\$10,471	\$12,507	\$13,530	Inquire
THREE PHASE							
PART #	5.3JF100	5.3JF150	5.3JF200	5.3JF250	5.3JF300	5.3JF400	5.3JF500
MSRP	\$9,587	\$10,189	\$10,892	\$11,274	\$14,339	\$15,003	Inquire

7-1/2HP PACKAGES

CORD LENGTH	100 FT	150 FT	200 FT	250 FT	300 FT	400 FT	500 FT
THREE PHASE							
PART #	7.3JF100	7.3JF150	7.3JF200	7.3JF250	7.3JF300	7.3JF400	7.3JF500
MSRP	\$9,927	\$10,752	\$11,279	\$13,834	\$14,936	\$17,567	Inquire

Product Notes:

1. Prices in bold have quick disconnect installed on power cords.
2. 5HP, single phase units include C-95 control panel. 5HP, three phase units include CF-3235 control panel.
3. 7-1/2HP, three phase units include CF-3075 control panel.
4. Control panels allow timing and lights to be managed from shore. See pg. 48 for more details.
5. Three phase, 460-480V available for special order in approved locations only. Contact Kasco for details.



Enjoy your fountain at night with easy-to-install lighting systems (pg. 21-27).



BALSAM

5HP - 18 FT. H X 34 FT. W
7-1/2HP - 21 FT. H X 36 FT. W



SPRUCE

5HP - 31 FT. H X 12 FT. W
7-1/2HP - 34 FT. H X 12 FT. W



LINDEN

5HP - 24.5 FT. H X 46 FT. W
7-1/2HP - 26 FT. H X 46 FT. W



REDWOOD

5HP - 32 FT. H X 6 FT. W
7-1/2HP - 36 FT. H X 8 FT. W



BIRCH

5HP - 24 FT. H X 14 FT. W
7-1/2HP - 26 FT. H X 16 FT. W

PREMIUM NOZZLES

J SERIES FOUNTAINS

Further define your J Series experience with a Premium Nozzle, now available for all HP sizes. Purchased separately, Kasco Premium Nozzles provide crisp and distinct streams of water for dramatic and attention-demanding displays. No tools are required for installation.



NEW AVAILABLE FOR ALL J SERIES HP

4 PATTERN CHOICES FOR 3/4 & 1HP UNITS - **NEW**

5 PATTERN CHOICES FOR 2, 3, 5 & 7-1/2HP UNITS

 SIMPLE TWIST-AND-LOCK INSTALLATION

 PURCHASED SEPARATELY



MIGHTY OAK



MAGNOLIA



MAHOGANY



MADRONE



PALM

PATTERN	NEW - 3/4 & 1HP PART NUMBERS & DIMENSIONS (H x W) (FT.)				2, 3, 5 & 7-1/2HP PART NUMBERS & DIMENSIONS (H x W) (FT.)					
	PART #	3/4HP - NEW	1HP - NEW	MSRP	PART #	2HP	3HP	5HP	7-1/2HP	MSRP
Mighty Oak	431335K	10 x 24	13 X 34	\$140	841335K	14.5 x 40	19.5 x 51	24.5 x 58	27 x 60	\$295
Magnolia	431325K	9 x 29	11.5 x 37	\$140	841325K	13.5 x 44	18 x 60	23.5 x 72	26 x 80	\$295
Mahogany	431345K	11.5 x 28	14 x 34	\$140	841345K	16 x 40	21 x 58	28 x 64	29 x 72	\$295
Madrone	431330K	11.5 x 28	14 x 35	\$140	841330K	15 x 43	20 x 59	24 x 70	26 x 75	\$295
Palm	-	-	-	-	841320K	12 x 26	16 x 36	20.5 x 40	22 x 42	\$295



MIGHTY OAK



MAGNOLIA



MAHOGANY



MADRONE



PALM



VFX SERIES

The Best of Beauty and Aeration

Kasco VFX Series is the choice for an elegant display with superior aeration benefits. These high-flow units are efficient, easy to install and operate, and are ideal for many applications.

Packages include motor unit, float, bottom screen, mooring ropes, power cord, and control panel with human-rated GFCI protection.

Available in 1/2-5HP sizes and single and three phase options to fit virtually any application.

Complete packages are ETL Listed to UL and CSA standards.



120V

VFX FOUNTAIN

- Single phase
- 1/2HP operates in as little as 15 in. of water
- 3/4HP operates in as little as 17.5 in. of water
- 1HP operates in as little as 19 in. of water
- 1-piece tapered float is easy to install and looks sleek at the surface
- Control panels feature human-rated GFCI protection



HP 1/2, 3/4 & 1HP AVAILABLE

V SHAPED PATTERN

 OPTIONAL LIGHTING PACKAGES (pg. 21-27)

 **2** YEAR WARRANTY

HP	DISPLAY		CORD LENGTH	50 FT	100 FT	150 FT	200 FT
	H (FT)	W (FT)					
SINGLE PHASE PACKAGES							
1/2	5	15	PART #	2400VFX050	2400VFX100	2400VFX150	2400VFX200
			MSRP	\$1,522	\$1,681	\$2,187	\$2,413
3/4	5.5	21	PART #	3400VFX050	3400VFX100	3400VFX150	3400VFX200
			MSRP	\$1,612	\$1,772	\$2,288	\$2,521
1	8	26	PART #	4400VFX050	4400VFX100	4400VFX150	4400VFX200
			MSRP	\$1,915	\$2,468	\$3,101	\$3,460

Product Notes:

1. Prices in bold have quick disconnect installed on power cords.
2. 1/2-1HP, single phase units include C-25 control panel.
3. Control panels allow timing and lights to be managed from shore. See pg. 48 for more details.



Enjoy your fountain at night with easy-to-install lighting systems (pg. 21-27).

208-240V

VFX FOUNTAIN

- Single and three phase options
- 3/4HP operates in as little as 17.5 in. of water
- 1HP operates in as little as 19 in. of water
- 2HP operates in as little as 20 in. of water
- 5HP operates in as little as 26 in. of water
- 1-piece tapered float is easy to install and looks sleek at the surface
- Control panels feature human-rated GFCI protection



HP 3/4, 1, 2 & 5HP AVAILABLE

V SHAPED PATTERN

OPTIONAL LIGHTING PACKAGES (pg. 21-27)

2 YEAR WARRANTY ON 3/4 & 1HP UNITS

3 YEAR WARRANTY ON 2 & 5HP UNITS

OPTIONAL EXTENDED WARRANTY (pg. 54)

HP	DISPLAY		CORD LENGTH	50 FT	100 FT	150 FT	200 FT	250 FT	300 FT	400 FT	500 FT
	H (FT)	W (FT)									
SINGLE PHASE PACKAGES											
3/4	5.5	21	PART #	3400HVFX050	3400HVFX100	3400HVFX150	3400HVFX200	3400HVFX250	3400HVFX300	3400HVFX400	3400HVFX500
			MSRP	\$2,934	\$3,057	\$3,631	\$3,817	\$3,904	\$3,997	\$4,433	Inquire
1	8	26	PART #	4400HVFX050	4400HVFX100	4400HVFX150	4400HVFX200	4400HVFX250	4400HVFX300	4400HVFX400	4400HVFX500
			MSRP	\$3,285	\$3,402	\$4,014	\$4,212	\$4,414	\$4,516	\$4,999	Inquire
2	8	32	PART #	8400VFX050	8400VFX100	8400VFX150	8400VFX200	8400VFX250	8400VFX300	8400VFX400	8400VFX500
			MSRP	\$5,079	\$5,615	\$5,761	\$5,915	\$6,100	\$7,097	\$10,478	Inquire
5	10	34	PART #	-	5.1VFX100	5.1VFX150	5.1VFX200	5.1VFX250	5.1VFX300	5.1VFX400	5.1VFX500
			MSRP	-	\$7,214	\$7,953	\$8,117	\$9,920	\$11,794	\$14,212	Inquire
THREE PHASE PACKAGES											
2	8	32	PART #	2.3VFX050	2.3VFX100	2.3VFX150	2.3VFX200	2.3VFX250	2.3VFX300	2.3VFX400	2.3VFX500
			MSRP	\$8,180	\$8,358	\$8,693	\$8,868	\$9,429	\$9,892	\$12,175	Inquire
5	10	34	PART #	-	5.3VFX100	5.3VFX150	5.3VFX200	5.3VFX250	5.3VFX300	5.3VFX400	5.3VFX500
			MSRP	-	\$9,597	\$10,207	\$11,084	\$11,731	\$14,431	\$15,545	Inquire

Product Notes:

1. Prices in bold have quick disconnect installed on power cords.
2. 3/4-2HP, single phase units include C-85 control panel; single phase, 5HP units include C-95 control panel.
3. 2 and 5HP, three phase units include CF-3235 control panel.
4. Control panels allow timing and lights to be managed from shore. See pg. 48 for more details.
5. Three phase, 460-480V option available for special order in approved locations only. Contact Kasco for details.



WATERGLOW LIGHTING

Add Beauty to Your Evening Displays

Kasco WaterGlow Lighting dramatically illuminates your fountain or surface aerator pattern during the evening hours. Available in composite or stainless steel housings and with several color options, these versatile LED lights are a perfect addition to your display.

NEW RGBW LED SYSTEMS with ultra-vibrant color displays will be available Spring 2022. See next page for more details.

Easy-to-install, snap-on light clips included with RGB LED, Composite LED and Stainless Steel LED systems.

Multiple sizes and styles available to suit countless applications.



NEW RGBW LED LIGHTING SYSTEMS

A BRILLIANT COLOR EXPERIENCE

Kasco's NEW RGBW LED WaterGlow Lighting Systems bring captivating, vibrant hues to your evening fountain display. Powered by high-performance LED's and optics, the entire fountain pattern is beautifully illuminated with exceptionally rich colors for a dramatic visual showing. Controlled with a Wi-Fi enabled mobile device and touch pad, or push-button controller and wireless remote, these systems offer a versatile and inspiring color experience.



Exceptional color quality throughout entire display



Color is evenly blended and distributed for a rich display from every viewing angle



Create your own experience with 36 pre-programmed settings, ranging from single colors to holiday themes



Fixtures are only partially submerged, allowing for the full light output to illuminate pattern



Durable, stainless steel fixtures are fully sealed for watertight operation



Individually mounted fixtures are adjustable to optimize illumination of any pattern (geyser, tiered, etc.)

NEW RGBW LED

WATERGLOW LIGHTING

- Control light settings with Wi-Fi and optional phone app, or push-button controller and wireless remote
- Heavy-duty stainless steel enclosures for watertight operation
- 2, 3, and 4 fixture kits available in several cord lengths
- Packages include light fixtures, mounting brackets, power cord, protective cord sleeve, quick disconnect on main power cord, and control panel
- Runs on 120 VAC power
- UL / CSA Listed



 36 PRE-PROGRAMMED SETTINGS, RANGING FROM SINGLE COLORS TO HOLIDAY THEMES. INDIVIDUAL FIXTURES ARE DMX ADDRESSABLE.

 40 WATTS AND 2,376 LUMENS PER FIXTURE

 3 YEAR WARRANTY

WI-FI ENABLED PACKAGES (SW MODELS)

Use the touch pad inside the panel to easily control color, sequencing patterns, and power. Download the app from your iOS or Android app store to access the same options from a distance on your Wi-Fi enabled mobile device.

PUSH-BUTTON PACKAGES (SL MODELS)

Use the push-button controller inside the panel or the included wireless remote to easily cycle through colors, sequencing patterns, and to power the system on and off.

RGBW LED PACKAGES - PRICING WILL BE AVAILABLE SPRING 2022. CONTACT KASCO FOR DETAILS.

MODEL	NUMBER OF FIXTURES	CORD LENGTH (FT)	CONTROL OPTION
WI-FI ENABLED PACKAGES (SW PACKAGES)			
RGBW2SW40	2	100, 150, 200, 250, 300, 400, 500	Touch pad inside control panel or Wi-Fi enabled mobile device
RGBW3SW40	3	100, 150, 200, 250, 300, 400, 500	
RGBW4SW40	4	100, 150, 200, 250, 300, 400, 500	
PUSH-BUTTON PACKAGES (SL MODELS)			
RGBW2SL40	2	100, 150, 200, 250, 300, 400, 500	Push-button controller inside control panel or included wireless remote
RGBW3SL40	3	100, 150, 200, 250, 300, 400, 500	
RGBW4SL40	4	100, 150, 200, 250, 300, 400, 500	

Product Notes:

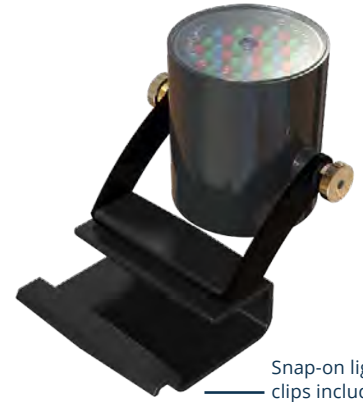
1. Each fixture is daisy-chained together for easy installation.
2. Wireless remote in Push-Button Packages (SL models) include batteries.

RGB LED

WATERGLOW LIGHTING

Kasco RGB LED Lighting Systems add vibrancy to any evening water display with exceptional color options, rhythmic patterns, and musical capabilities.

- One-piece composite housing features ultrasonic weld for watertight operation
- Includes light fixtures, brackets, snap-on clips, power cord, waterproof disconnect caps, remote control, and RGB control panel
- 6-fixture kits ship with 2 power cords
- Runs on 24 VDC power



Snap-on light clips included for easy installation



CORD LENGTH	50 FT	100 FT	150 FT	200 FT	250 FT	300 FT	400 FT
3 FIXTURE KITS (RECOMMENDED FOR 1/2 - 1HP UNITS)							
PART #	RGB3C5-050	RGB3C5-100	RGB3C5-150	RGB3C5-200	RGB3C5-250	RGB3C5-300	RGB3C5-400
MSRP	\$1,313	\$1,500	\$1,687	\$1,870	\$2,071	\$2,672	\$3,184
6 FIXTURE KITS (RECOMMENDED FOR 2 & 3HP UNITS)							
PART #	RGB6C5-050	RGB6C5-100	RGB6C5-150	RGB6C5-200	RGB6C5-250	RGB6C5-300	RGB6C5-400
MSRP	\$2,366	\$2,779	\$3,192	\$3,605	\$4,033	\$5,400	\$6,539

Product Notes:

1. Each kit includes waterproof caps allowing customers to leave the main power cord in the water when fixtures are pulled for maintenance or storage.



Kasco RGB LED lights look great on 1/2 - 3HP fountains.

COMPOSITE LED

WATERGLOW LIGHTING

These LED Lighting Systems provide classic elegance and include 4 colored lenses to create the perfect illuminated setting.

- One-piece composite housing features ultrasonic weld for watertight operation
- Includes light fixtures, brackets, snap-on clips, power cord, waterproof disconnect caps, colored lenses, and lens caps
- Runs on 120 VAC power



Snap-on light clips included for easy installation

 **5** COLOR OPTIONS | WHITE WITH RED, GREEN, BLUE & AMBER LENSES INCLUDED

 11 WATTS AND 910 LUMENS PER FIXTURE

 **2** YEAR WARRANTY

CORD LENGTH	50 FT	100 FT	150 FT	200 FT	250 FT	300 FT	400 FT	500 FT
3-FIXTURE KITS (RECOMMENDED FOR 1/2 - 1HP UNITS)								
PART #	LED3C11-050	LED3C11-100	LED3C11-150	LED3C11-200	LED3C11-250	LED3C11-300	LED3C11-400	LED3C11-500
MSRP	\$863	\$952	\$1,033	\$1,123	\$1,243	\$1,322	\$1,454	\$1,777
6-FIXTURE KITS (RECOMMENDED FOR 2 - 5HP UNITS)								
PART #	LED6C11-050	LED6C11-100	LED6C11-150	LED6C11-200	LED6C11-250	LED6C11-300	LED6C11-400	LED6C11-500
MSRP	\$1,723	\$1,807	\$1,897	\$1,988	\$2,089	\$2,194	\$2,358	\$2,684

Product Notes:

1. Each kit includes waterproof caps allowing customers to leave the main power cord in the water when fixtures are pulled for maintenance or storage.



Kasco Composite LED lights look great on 1/2 - 5HP fountains.

STAINLESS STEEL LED

WATERGLOW LIGHTING

Kasco Stainless Steel Lighting Systems ensure a radiant display long into the evening hours and offer 4 colored lenses.

- Features a heavy-duty stainless steel enclosure for reliable operation
- Includes light fixtures, brackets, snap-on light clips, power cord, colored lenses, and lens caps
- Runs on 120 VAC power
- UL / CSA Listed



Snap-on light clips included for easy installation.

 **5** COLOR OPTIONS | WHITE WITH RED, GREEN, BLUE & AMBER LENSES INCLUDED

 19 WATTS AND 1,700 LUMENS PER FIXTURE

 **3** YEAR WARRANTY

CORD LENGTH	50 FT	100 FT	150 FT	200 FT	250 FT	300 FT	400 FT	500 FT
3-FIXTURE KITS (RECOMMENDED FOR 2 & 3HP UNITS)								
PART #	LED3S19-050	LED3S19-100	LED3S19-150	LED3S19-200	LED3S19-250	LED3S19-300	LED3S19-400	LED3S19-500
MSRP	\$1,586	\$1,660	\$1,740	\$1,820	\$1,893	\$1,991	\$2,166	\$2,429
6-FIXTURE KITS (RECOMMENDED FOR 3 - 7-1/2HP UNITS)								
PART #	LED6S19-050	LED6S19-100	LED6S19-150	LED6S19-200	LED6S19-250	LED6S19-300	LED6S19-400	LED6S19-500
MSRP	\$3,094	\$3,180	\$3,269	\$3,358	\$3,457	\$3,559	\$3,721	\$3,840

Product Notes:

1. Each fixture is daisy-chained together for easy installation.



Kasco Stainless Steel LED lights look great on 2 - 7-1/2HP fountains.

UNIVERSAL LIGHTING

WATERGLOW LIGHTING

- 4-fixture kits for non-Kasco units
- Offered as RGB LED, Composite LED, and Stainless Steel LED



CORD LENGTH	50 FT	100 FT	150 FT	200 FT	250 FT	300 FT	400 FT	500 FT
RGB LED 4-FIXTURE KITS								
PART #	RGB4C5-050	RGB4C5-100	RGB4C5-150	RGB4C5-200	RGB4C5-250	RGB4C5-300	-	-
MSRP	\$1,511	\$1,721	\$1,931	\$2,407	\$2,560	\$2,966	-	-
COMPOSITE LED 4-FIXTURE KITS								
PART #	LED4C11-050	LED4C11-100	LED4C11-150	LED4C11-200	LED4C11-250	LED4C11-300	LED4C11-400	LED4C11-500
MSRP	\$1,119	\$1,242	\$1,327	\$1,415	\$1,535	\$1,613	\$1,735	\$2,009
STAINLESS STEEL LED 4-FIXTURE KITS								
PART #	LED4S19-050	LED4S19-100	LED4S19-150	LED4S19-200	LED4S19-250	LED4S19-300	LED4S19-400	LED4S19-500
MSRP	\$2,181	\$2,258	\$2,341	\$2,424	\$2,517	\$2,613	\$2,764	\$3,063

LIGHTING SELECTION GUIDE

Below are the lighting systems recommended for each unit size (HP). Background light pollution, fountain pattern, and fixture angle can affect visual experience. Contact Kasco to learn about the best system for your application.

LIGHTING SYSTEM			RECOMMENDED UNIT SIZE (HP)						
LIGHT SYSTEM	MODEL	NUMBER OF FIXTURES	1/2	3/4	1	2	3	5	7-1/2
RGB LED	RGB3C5	3	✓	✓	✓				
RGB LED	RGB6C5	6				✓	✓		
Composite LED	LED3C11	3	✓	✓	✓				
Composite LED	LED6C11	6				✓	✓	✓	
Stainless Steel LED	LED3S19	3				✓	✓		
Stainless Steel LED	LED6S19	6					✓	✓	✓
RGBW	RGBW2SW40 RGBW2SL40	2				✓			
RGBW	RGBW3SW40 RGBW3SL40	3				✓	✓	✓	✓
RGBW	RGBW4SW40 RGBW4SL40	4						✓	✓

NEW - AQUATICLEAR™ BY KASCO

THE FIRST & ONLY CLOG-FREE CIRCULATOR

Create an inviting waterfront experience with AquatiClear™ by Kasco, the first and only clog-free circulator. With its revolutionary prop guard featuring smooth, rounded tines, floating debris, algae and anything else that makes its way to your shoreline simply flows right by. This eliminates the need for frequent maintenance and keeps your waterfront looking and smelling clean and beautiful.



Crown-like prop guard with smooth, rounded tines allows for clog-free operation



Custom designed prop for each HP ensures efficient operation for maximum results



Prop guard designed with durable composite material



Energy-efficient, high-performance water movement



External metal and hardware are stainless steel and protected by sacrificial anode



NEW AQUATICLEAR™

Clog-Free Waterfront Management

AquatiClear™ by Kasco is a clog-free circulator™ that produces continuous water movement, keeping docks, marinas, canals, and shorelines free from algae, floating debris, and foul odors. With our revolutionary Clean Current Technology (patent pending), AquatiClear allows for maintenance-free, continuous operation.

Packages include motor unit and power cord. Mounting options and control panel available.

Revolutionary crown-like prop guard with smooth, rounded tines prevents floating algae and debris from clogging the unit.

Universal Mount Kit packages include NEW Simple Swivel bracket (patent pending) allowing easy rotation of the unit to direct flow of water.



AQUATICLEAR™

CLOG-FREE CIRCULATOR

- 120V, 208-240V, single phase options
- Optional control panels include human-rated GFCI protection
- Marine-grade stainless steel for saltwater / brackish water compatibility
- Unit only, Horizontal Float Kit, and Universal Mount Kit options
- Universal Mount Kit packages include Simple Swivel bracket (patent pending) allowing easy rotation of the unit to direct flow of water
- Complete packages are ETL Listed to UL and CSA Standards



HP 1/2, 3/4 & 1HP
AVAILABLE

 CLEAN CURRENT
TECHNOLOGY

 2 YEAR
WARRANTY

HP	VOLT (V)	MODEL	CORD LENGTH							
			25 FT	50 FT	100 FT	150 FT	200 FT	250FT	300 FT	400 FT
UNIT ONLY PACKAGES - NO MOUNT										
1/2	120	2400C	\$946	\$979	\$1,138	\$1,643	\$1,868	-	-	-
3/4	120	3400C	\$1,023	\$1,063	\$1,207	\$1,691	\$1,918	-	-	-
3/4	208-240	3400HC	-	\$1,106	\$1,229	\$1,795	\$1,976	\$2,113	\$2,204	\$2,646
1	120	4400C	-	\$1,204	\$1,682	\$2,311	\$2,614	-	-	-
1	208-240	4400HC	-	\$1,248	\$1,365	\$1,972	\$2,161	\$2,434	\$2,534	\$2,795
HORIZONTAL FLOAT PACKAGES										
1/2	120	2400CFM	\$1,437	\$1,470	\$1,629	\$2,134	\$2,359	-	-	-
3/4	120	3400CFM	\$1,514	\$1,554	\$1,698	\$2,182	\$2,409	-	-	-
3/4	208-240	3400HCFM	-	\$1,597	\$1,720	\$2,286	\$2,467	\$2,604	\$2,695	\$3,137
1	120	4400CFM	-	\$1,695	\$2,173	\$2,802	\$3,105	-	-	-
1	208-240	4400HCFM	-	\$1,739	\$1,856	\$2,463	\$2,652	\$2,925	\$3,025	\$3,286
UNIVERSAL MOUNT PACKAGES (CUSTOMER MUST SUPPLY PIPE)										
1/2	120	2400CDM	\$1,341	\$1,374	\$1,533	\$2,038	\$2,263	-	-	-
3/4	120	3400CDM	\$1,418	\$1,458	\$1,602	\$2,086	\$2,313	-	-	-
3/4	208-240	3400HCDM	-	\$1,501	\$1,624	\$2,190	\$2,371	\$2,508	\$2,599	\$3,041
1	120	4400CDM	-	\$1,599	\$2,077	\$2,706	\$3,009	-	-	-
1	208-240	4400HCDM	-	\$1,643	\$1,760	\$2,367	\$2,556	\$2,829	\$2,929	\$3,190

Product Notes:

1. Prices in bold have quick disconnect installed on power cords.
2. Part # is the model combined with cord length (ex. 3400CDM150).
3. Optional control panel allows timing to be managed from shore. See pg. 48 for more details.
4. Optional double-mechanical seal and stainless steel domed top available. See pg. 49 for more details.
5. Kasco recommends placing motor unit at least 2 ft. below the surface of the water to prevent audible unit cavitation / ventilation.
6. Do not install too close to the bottom of water body. Improper placement can disturb bottom sediment. Check local regulations for guidelines and restrictions.

CLEAN CURRENT TECHNOLOGY

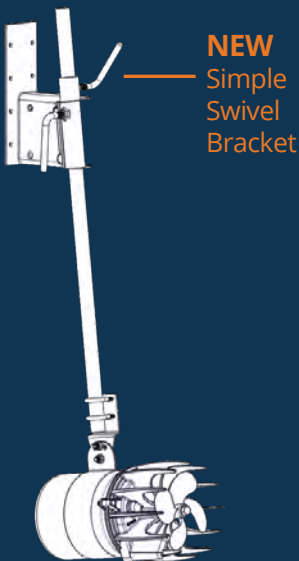


AquatiClear™ by Kasco uses Clean Current Technology, making it the only circulator designed for maintenance-free, continuous operation. Utilizing a newly designed prop guard with independent, rounded tines, floating debris will quickly flow past the unit. This keeps the water near docks, boats, shorelines, canals and walkways clean and beautiful.

MOUNTING OPTIONS

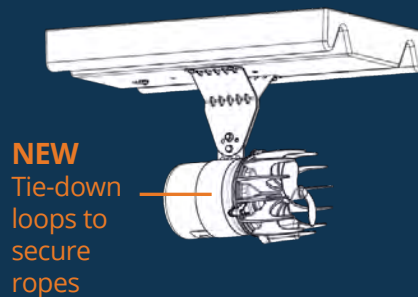
UNIVERSAL MOUNT WITH SIMPLE SWIVEL

The Universal Mount Kit allows AquatiClear™ units to be easily mounted to structures like a dock. Easily adjust unit angle and depth, and now rotation, using the newly designed Simple Swivel bracket (patent pending).



HORIZONTAL FLOAT WITH NEW TIE-DOWN LOOPS

The Horizontal Float Kit uses three ropes to secure AquatiClear™ to the shore at the water's surface. Installation is even easier with the newly designed tie-down loops. Choose from three angles of orientation to create a flow of water in the desired direction.





SURFACE AERATORS

High Oxygen Transfer at Extreme Value

Kasco Surface Aerators push high volumes of water into the air. This process increases the overall health of your water and keeps it thoroughly mixed. Introducing oxygen and water movement breaks up stratification, eliminates odor, discourages algae growth and promotes a healthy aquatic environment.

Proven aeration performance for continuous, supplemental, or emergency use in depths less than 8 ft.

Available in 1/2 - 5HP, single or three phase options to fit a variety of applications.

Packages that include control panels are ETL Listed to UL and CSA standards.



SINGLE PHASE


SURFACE AERATOR



- 120V and 208-240V options
- 1/2HP operates in as little as 15 in. of water
- 3/4HP operates in as little as 17.5 in. of water
- 1HP operates in as little as 19 in. of water
- Optional control panels feature human-rated GFCI protection

HP 1/2-5HP AVAILABLE

 OPTIONAL LIGHTING PACKAGES (pg. 21-27)

 **2** YEAR WARRANTY ON 1/2, 3/4 & 1HP UNITS

 **3** YEAR WARRANTY ON 2, 3 & 5HP UNITS
OPTIONAL EXTENDED WARRANTY (pg. 54)

120V PACKAGES (CONTROL PANEL SOLD SEPARATELY)

HP	MODEL	25 FT	50 FT	100 FT	150 FT	200 FT
1/2	2400A	\$846	\$879	\$1,038	\$1,543	\$1,768
	2400AF	-	\$1,124	\$1,283	\$1,789	\$2,015
	2400AF (BTM SCR)	-	\$1,347	\$1,506	\$2,012	\$2,238
3/4	3400A	\$923	\$963	\$1,107	\$1,591	\$1,818
	3400AF	-	\$1,202	\$1,367	\$1,884	\$2,117
	3400AF (BTM SCR)	-	\$1,425	\$1,590	\$2,107	\$2,340
1	4400A	\$1,025	\$1,104	\$1,582	\$2,211	\$2,514
	4400AF	-	\$1,470	\$1,977	\$2,730	\$2,983
	4400AF (BTM SCR)	-	\$1,693	\$2,200	\$2,953	\$3,206

Product Notes:

1. Prices in bold have quick disconnect installed on power cords.
2. Part # is the model combined with cord length (ex. 2400AF050).
3. "A" models only include motor unit, "AF" models include floats, "BTM SCR" models include bottom screens.
4. Optional control panels available to allow timing and lights to be managed from shore. See pg. 48 for more details.
5. Optional double-mechanical seal and stainless steel domed top available. See pg. 49 for more details.



Kasco Surface Aerators deliver up to 3.0 lbs. of O₂ per horsepower, per hour of operation, making them the most dependable and efficient units on the market.

208-240V PACKAGES (CONTROL PANEL SOLD SEPARATELY)

HP	MODEL	CORD LENGTH							
		50 FT	100 FT	150 FT	200 FT	250 FT	300 FT	400 FT	500 FT
3/4	3400HA	\$1,006	\$1,129	\$1,695	\$1,876	\$2,013	\$2,104	\$2,546	Inquire
	3400HAF	\$1,257	\$1,381	\$1,947	\$2,129	\$2,260	\$2,350	\$2,789	Inquire
	3400HAF (BTM SCR)	\$1,480	\$1,604	\$2,170	\$2,352	\$2,483	\$2,573	\$3,012	Inquire
1	4400HA	\$1,148	\$1,265	\$1,872	\$2,061	\$2,334	\$2,434	\$2,695	Inquire
	4400HAF	\$1,489	\$1,606	\$2,206	\$2,403	\$2,603	\$2,704	\$2,789	Inquire
	4400HAF (BTM SCR)	\$1,712	\$1,829	\$2,429	\$2,626	\$2,826	\$2,927	\$3,012	Inquire
2	8400A	\$1,925	\$2,389	\$2,594	\$2,770	\$2,974	\$3,942	\$7,795	Inquire
	8400AF	\$3,142	\$3,661	\$3,848	\$4,035	\$4,224	\$5,118	\$8,606	Inquire
	8400AF (BTM SCR)	\$3,365	\$3,884	\$4,071	\$4,258	\$4,447	\$5,341	\$8,829	Inquire
3	3.1A	\$2,532	\$2,782	\$3,134	\$3,774	\$4,142	\$4,415	\$7,982	Inquire
	3.1AF	\$3,917	\$4,350	\$4,503	\$4,988	\$5,301	\$5,662	\$8,986	Inquire
	3.1AF (BTM SCR)	\$4,140	\$4,573	\$4,726	\$5,211	\$5,524	\$5,885	\$9,209	Inquire
5	5.1A	-	\$3,796	\$4,464	\$4,569	\$6,482	\$8,276	\$11,149	Inquire
	5.1AF	-	\$5,062	\$5,807	\$5,901	\$7,724	\$9,525	\$12,121	Inquire
	5.1AF (BTM SCR)	-	\$5,285	\$6,030	\$6,124	\$7,947	\$9,748	\$12,344	Inquire

Product Notes:

1. Prices in bold have quick disconnect installed on power cords.
2. Part # is the model combined with cord length (ex. 3400HAF050).
3. "A" models only include motor unit, "AF" models include floats, "BTM SCR" models include bottom screens.
4. Optional control panels available to allow timing and lights to be managed from shore. See pg. 48 for more details.
5. Optional double-mechanical seal and stainless steel domed top available. See pg 49 for more details.



#1 Surface Aerator on the market, offering reliable benefits for backyard ponds, fish farms, industrial applications and more.

THREE PHASE

SURFACE AERATOR

- 208-240V
- Control panels have 30ma GFI protection
- "U" models (on next page) do not include control panels
- "U" models (on next page) are ETL Recognized to UL & CSA standards



HP 2, 3 & 5HP
AVAILABLE

 OPTIONAL LIGHTING
PACKAGES (pg. 21-27)

 **3** YEAR WARRANTY
ON 2, 3 & 5HP UNITS
OPTIONAL EXTENDED
WARRANTY (pg. 54)

208-240V PACKAGES (CA-3235 CONTROL PANEL INCLUDED)

HP	MODEL	CORD LENGTH							
		50 FT	100 FT	150 FT	200 FT	250 FT	300 FT	400 FT	500 FT
2	2.3A	\$5,273	\$5,451	\$5,801	\$6,003	\$6,514	\$6,882	\$8,825	Inquire
	2.3AF	\$6,487	\$6,660	\$7,006	\$7,205	\$7,726	\$8,078	\$9,849	Inquire
	2.3AF (BTM SCR)	\$6,710	\$6,883	\$7,229	\$7,428	\$7,949	\$8,301	\$10,072	Inquire
3	3.3A	\$5,778	\$5,969	\$6,317	\$6,725	\$6,890	\$8,142	\$9,361	Inquire
	3.3AF	\$7,087	\$7,272	\$7,629	\$8,028	\$8,183	\$9,448	\$10,705	Inquire
	3.3AF (BTM SCR)	\$7,310	\$7,495	\$7,852	\$8,251	\$8,406	\$9,671	\$10,928	Inquire
5	5.3A	-	\$6,485	\$7,047	\$7,707	\$8,335	\$10,889	\$11,747	Inquire
	5.3AF	-	\$7,764	\$8,328	\$8,986	\$9,623	\$12,186	\$13,079	Inquire
	5.3AF (BTM SCR)	-	\$7,987	\$8,551	\$9,209	\$9,846	\$12,409	\$13,302	Inquire

Product Notes:

1. Prices in bold have quick disconnect installed on power cords.
2. Part # is the model combined with cord length (ex. 2.3AF050).
3. "A" models only include motor unit, "AF" models include floats, "BTM SCR" models include bottom screens.
4. The above three phase models include 30ma trip-level protected control panel (CA-3235). See pg. 48 for more details.
5. Optional double-mechanical seal and stainless steel domed top available. See pg. 49 for more details.
6. Three phase, 460-480V available for special order in approved locations only. Contact Kasco for details.



Pair with Macro-Zyme™
Beneficial Bacteria or
WaterGlow Lighting
System.

208-240V PACKAGES (CONTROL PANEL NOT INCLUDED)

HP	MODEL	CORD LENGTH							
		50 FT	100 FT	150 FT	200 FT	250 FT	300 FT	400 FT	500 FT
2	U2.3A	\$2,547	\$2,725	\$3,075	\$3,277	\$3,788	\$4,156	\$6,099	Inquire
	U2.3AF	\$3,761	\$3,934	\$4,280	\$4,479	\$5,000	\$5,352	\$7,123	Inquire
	U2.3AF (BTM SCR)	\$3,984	\$4,157	\$4,503	\$4,702	\$5,223	\$5,575	\$7,346	Inquire
3	U3.3A	\$3,049	\$3,240	\$3,588	\$3,995	\$4,160	\$5,412	\$6,631	Inquire
	U3.3AF	\$4,357	\$4,542	\$4,899	\$5,298	\$5,453	\$6,718	\$7,975	Inquire
	U3.3AF (BTM SCR)	\$4,580	\$4,765	\$5,122	\$5,521	\$5,676	\$6,941	\$8,198	Inquire
5	U5.3A	-	\$3,761	\$4,323	\$4,982	\$5,611	\$8,165	\$9,023	Inquire
	U5.3AF	-	\$5,040	\$5,604	\$6,261	\$6,898	\$9,462	\$10,354	Inquire
	U5.3AF (BTM SCR)	-	\$5,263	\$5,827	\$6,484	\$7,121	\$9,685	\$10,577	Inquire

Product Notes:

1. Prices in bold have quick disconnect installed on power cords.
2. Part # is the model combined with cord length (ex. U2.3AF050).
3. "U" models do not include control panels and are ETL Recognized to UL & CSA standards.
4. "A" models only include motor unit, "AF" models include floats, "BTM SCR" include bottom screens.
5. Optional double-mechanical seal and stainless steel domed top available. See pg. 49 for more details.
6. Three phase, 460-480V available for special order in approved locations only. Contact Kasco for details.
7. The above three phase models do not include control panels and require field-installed motor overload protection.





ROBUST-AIRE™ DUAL LOOP DIFFUSED AERATION

Move & Aerate Large Volumes of Water

Robust-Aire™ systems are quiet and provide great aeration benefits in depths 8 ft. or greater. A shore-mounted compressor pushes air through self-weighted lines to a dual loop diffuser on the bottom of the pond, lake or tank. This beneficial mixing increases oxygen transfer and improves water quality to eliminate thermal and chemical stratification, expand fish habitat, and more.

Packages include dual loop diffuser assembly, compressor, and compressor mounting option. Some models include SureSink Tubing.

Stainless steel dual loop diffuser assembly includes built-in strain relief and is self-weighted to land right side up every time.

Independently tested to be up to 44% more efficient than competing diffusers.



ROBUST-AIRE™

DUAL LOOP DIFFUSED AERATION SYSTEM

- Dual loop diffuser provides high volumes of upward water movement
- Proprietary diffuser membrane material will not clog
- Base Mount, Post Mount or No-Cabinet compressor mounting options
- Large air filters allow for less frequent maintenance
- Visual maintenance indicator alerts when air filter needs attention
- Lifetime warranty on diffuser assembly and cabinet



34% QUIETER THAN PREVIOUS MODELS

8 FT MOST EFFICIENT AT 8 FT. OR DEEPER

 NO ELECTRICITY IN WATER

 PAIR WITH MACRO-ZYME™ BENEFICIAL BACTERIA

 **WARRANTY**
COMPRESSOR - 3 YEARS
TUBING - 15 YEARS
DIFFUSER - LIFETIME
CABINET - LIFETIME

STANDARD SYSTEMS

SYSTEMS INCLUDE	NO CABINET		POST MOUNT CABINET		BASE MOUNT CABINET		REMOTE MANIFOLD SYSTEMS*
	120V	208-240V	120V	208-240V	120V	208-240V	
SYSTEM 1 (1) Diffuser Assembly 100 ft. 3/8 in. Tubing (1) 1/4HP Compressor	RA1-NC	RAH1-NC	RA1-PM	RAH1-PM	RA1	RAH1	Add "-RM" to the end of any RA1 or RAH1 part # and increase cost by \$94
	\$1,356		\$1,831		\$2,452		
SYSTEM 2 (2) Diffuser Assemblies 200 ft. 3/8 in. Tubing (1) 1/4HP Compressor	RA2-NC	RAH2-NC	RA2-PM	RAH2-PM	RA2	RAH2	Add "-RM" to the end of any RA2 or RAH2 part # and increase cost by \$219
	\$2,006		\$2,444		\$3,060		
SYSTEM 3 (3) Diffuser Assemblies 300 ft. 3/8 in. Tubing (1) 1/2HP Compressor	RA3-NC	RAH3-NC	RA3-PM	RAH3-PM	RA3	RAH3	Add "-RM" to the end of any RA3 or RAH3 part # and increase cost by \$247
	\$2,607		\$3,142		\$3,724		
SYSTEM 4 (4) Diffuser Assemblies (2) 1/4HP Compressor	-	-	-	-	RA4	RAH4	Add "-RM" to the end of RA4 or RAH4 part # and increase cost by \$401
					\$4,452		
SYSTEM 5 (5) Diffuser Assemblies (1) 1/4HP Compressor (1) 1/2HP Compressor	-	-	-	-	RA5	RAH5	Add "-RM" to the end of RA5 or RAH5 part # and increase cost by \$423
					\$4,983		
SYSTEM 6 (6) Diffuser Assemblies (2) 1/2HP Compressors	-	-	-	-	RA6	RAH6	Add "-RM" to the end of RA6 or RAH6 part # and increase cost by \$448
					\$5,533		

* Remote Manifold Systems allow remote installation of cabinet, compressors and valves.

Product Notes:

1. Base Mount Systems (RA) 4 - 6 do not include tubing.
2. If less tubing is needed than what comes with the system, subtract retail price of the rolls not needed. If more rolls are needed, order these rolls as a separate line item.
3. No-Cabinet Systems (RA-NC) include universal compressor mounting kit with cooling fan.
4. Teich-Aire Compressor details are included on pg. 41.
5. Systems that include double-piston compressors and remote manifolds are available. Contact Kasco for details.

ROBUST-AIRE™

DUAL LOOP DIFFUSED AERATION SYSTEM

DOUBLE-PISTON SYSTEMS

These systems use 1/2HP double-piston compressors for more air flow to each diffuser.

SYSTEMS INCLUDE	NO CABINET		POST MOUNT CABINET		BASE MOUNT CABINET	
	120V	208-240V	120V	208-240V	120V	208-240V
SYSTEM 2 (2) Diffuser Assemblies 200 ft. 3/8 in. Tubing (1) 1/2HP Compressor	RA2DP-NC	RAH2DP-NC	RA2DP-PM	RAH2DP-PM	RA2DP	RAH2DP
	\$2,196		\$2,640		\$3,252	
SYSTEM 4 (4) Diffuser Assemblies (2) 1/2HP Compressors	-	-	-	-	RA4DP	RAH4DP
					\$4,837	
SYSTEM 5 (5) Diffuser Assemblies (2) 1/2HP Compressors	-	-	-	-	RA5DP	RAH5DP
					\$5,058	

Refer to pg. 38 for product notes.

XL SYSTEMS

These systems use 3/4HP double-piston compressors and 5/8 in. tubing for more air flow to each diffuser.

SYSTEMS INCLUDE	BASE MOUNT CABINET	
	120V	208-240V
SYSTEM 4 (4) Diffuser Assemblies (2) 3/4HP Compressors	RA4XL	RAH4XL
	\$5,804	
SYSTEM 5 (5) Diffuser Assemblies (2) 3/4HP Compressors	RA5XL	RAH5XL
	\$6,225	
SYSTEM 6 (6) Diffuser Assemblies (2) 3/4HP Compressors	RA6XL	RAH6XL
	\$6,649	

Refer to pg. 38 for product notes.



188% more surface area than competitive dual 12 in. membrane diffusers, producing up to 44% more GPM of upward flow than competitors.



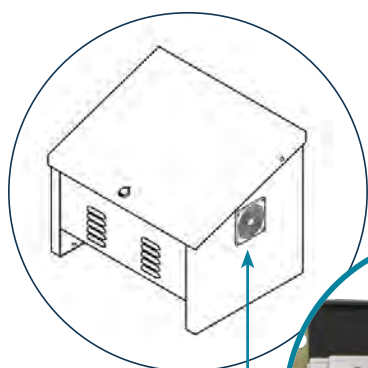
At 15 ft. of depth, 2 diffusers will move 6,300 GPM using 2.5 amps at 120V, which equates to \$0.72 a day at \$0.10 KW hour.

ROBUST-AIRE™ ACCESSORIES

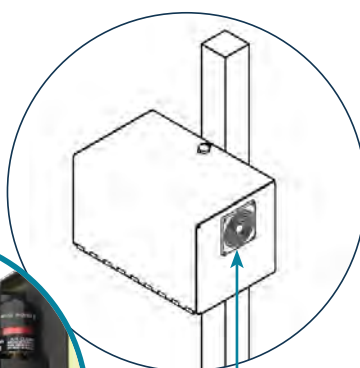
PART #	DESCRIPTION	INCLUDES	MSRP
772100	Robust-Aire Dual Loop Diffuser Assembly	(1) Diffuser assembly, (1) 3/8 in. and (1) 5/8 in. barbed fitting	\$321
773380	SureSink Weighted Tubing Kit 3/8 in. (100 ft.)	All necessary fittings for attaching to the compressor, diffuser assembly, and for extending length of tubing runs	\$152
773580	SureSink Weighted Tubing Kit 5/8 in. (100 ft.)	All necessary fittings for attaching to the compressor, diffuser assembly, and for extending length of tubing runs	\$186
773385	SureSink Weighted Tubing Kit 3/8 in. (500 ft. roll)	500 ft. rolls do not include fittings	\$646
773585	SureSink Weighted Tubing Kit 5/8 in. (500 ft. roll)	500 ft. rolls do not include fittings	\$942
773300	3/8 in. tube fitting kit (included in 3/8 in. x 100 ft. tubing kits)	(1) 3/8 in. x 3/8 in. barbed connector, (2) 3/8 in. hose clamps	\$6.40
773500	5/8 in. tube fitting kit (included in 5/8 in. x 100 ft. tubing kits)	(1) 5/8 in. x 5/8 in. barbed connector, (2) 3/8 in. x 5/8 in. barbed connectors, (2) 5/8 in. hose clamps, (2) 3/8 in. hose clamps	\$13.29
773310	10 pack of 3/8 in. connector kits	(10) 3/8 in. x 3/8 in. barbed connectors, (20) 3/8 in. hose clamps	\$37.83
773058	10 pack of 5/8 in. connector kits	(10) 5/8 in. x 5/8 in. barbed connectors, (20) 5/8 in. hose clamps	\$44.90

COMPRESSOR MOUNTING OPTIONS

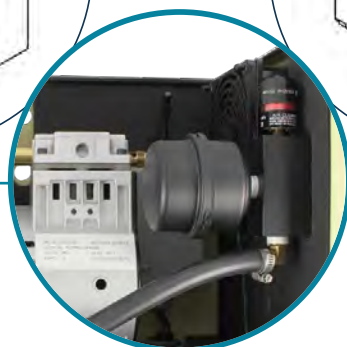
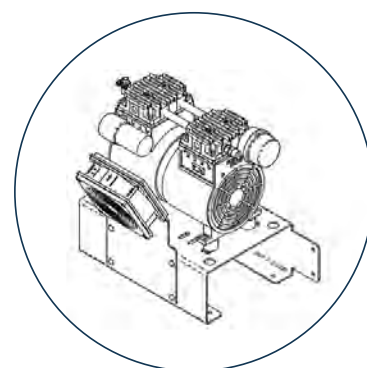
Base Mount



Post Mount



No-Cabinet



A visual maintenance indicator on the air filter turns red to signal when cleaning is needed.



SIZING & LAYOUT ASSISTANCE

Contact Kasco for a free, custom Robust-Aire™ layout using an aerial image of your pond or lake.

TEICH-AIRE

COMPRESSORS

- 120V and 208-240V options
- Quiet, oil-less piston compressors
- Built for continuous-duty, year-round, large aeration applications



ALL COMPRESSORS INCLUDE:

- Pressure relief valve
- Vibration mounts
- Intake air filter assembly
- Brass hose fittings
- 6 ft. power cord
- Thermal overload protection
- Ramped internal valve plate allowing for restart under load

HP 1/4, 1/2 & 3/4HP
AVAILABLE

 **3** YEAR
WARRANTY

CE 208-240V MODELS
HAVE CE CERTIFICATION

UL US 120V & 208-240V MODELS
ARE UL & CSA RECOGNIZED

PART #	HP	VOLT (V)	WEIGHT (LB)	AMP @ 0 PSI	AMP @ 20 PSI	MSRP
KM-60C	1/4	120	16	2.2	3.2	\$562
KM-60HC	1/4	208-240	16	1.1	1.6	\$562
KM-120C	1/2	120	19	3.0	4.0	\$719
KM-120HC	1/2	208-240	19	1.5	2.0	\$719
KM-200C	3/4	120	28	5.4	6.9	\$1,356
KM-200HC	3/4	208-240	28	3.1	3.7	\$1,356



SOLAR

Driving Our High-Performance Fountains, Aerators & Compressors

Kasco solar products allow our 120V and 208-240V standard fountain and aeration units, up to 2HP, to be powered by the sun. Controllers integrate a Variable Frequency Drive (VFD) to convert DC power to AC power.

Packages include Kasco unit, PicoCell™ or PicoBlender™ controller, solar panels and panel racking system.

Ideal for applications long distances from power.

Powers Kasco units to operate at the same high-performance standards.



SOLAR

- Available as solar power only or solar + power grid back-up system
- Operates fountains and surface aerators up to 2HP and Robust-Aire™ Post Mount Systems 1-3
- Installation requires (2) 18 in. diameter x 5 ft. deep holes for posts to be backfilled with concrete
- Customer must source ground rod, clamp and copper wire
- Controllers include status LED's and GFCI motor protection
- Outperforms smaller, low-voltage systems



WARRANTY

Kasco Unit: Standard Kasco Warranty
PicoCell™ or PicoBlender™ Controller: 1 yr
Solar Panels: 10 yrs

SOLAR ONLY CONTROLLER

Use solar energy to maximize daylight operation. In partial sun, the system runs at reduced speed to extend run time. These packages include the PicoCell™ 3500 Control Panel*.

SOLAR + POWER GRID CONTROLLER

Use solar energy during the day and the power grid at night to provide 24/7 performance. These packages include the PicoBlender™ 2500 Control Panel*.

* PicoCell™ and PicoBlender™ Control Panels are registered trademarks of Premiere Energy Holdings, Inc.



Kasco solar products offer high-performance alternative energy for operating our standard units.



EACH SOLAR PACKAGE INCLUDES:

- Kasco Fountain, Surface Aerator or Robust-Aire™ package
- PicoCell™ 3500 Control Panel* or PicoBlender™ 2500 Control Panel*
- 1-high or 2-high post driven ground mount
- Solar panels
- Panel racking system
- Solar panel connector cables
- DC disconnect

SOLAR POWER ONLY & SOLAR + POWER GRID PACKAGES

PICOCELL (C) & PICOBLENDER (B) MODELS	KASCO PRODUCT	HP / SYSTEM	VOLT	# OF SOLAR PANELS	CORD LENGTH			
					50 FT	100 FT	150 FT	200 FT
FOUNTAIN & SURFACE AERATOR PACKAGES								
SOL4P(C or B)-2400AF	Surface Aerator	1/2	120	4	\$9,442	\$9,601	\$10,107	\$10,333
SOL4P(C or B)-2400VFX	VFX Fountain	1/2	120	4	\$9,367	\$9,526	\$10,032	\$10,258
SOL6P(C or B)-3400AF	Surface Aerator	3/4	120	6	\$11,099	\$11,264	\$11,781	\$12,014
SOL6P(C or B)-3400VFX	VFX Fountain	3/4	120	6	\$11,036	\$11,196	\$11,712	\$11,945
SOL6P(C or B)-3400JF	J Series Fountain	3/4	120	6	\$11,253	\$11,419	\$11,939	\$12,172
SOL8P(C or B)-4400HAF	Surface Aerator	1	208-240	8	\$12,288	\$12,405	\$13,005	\$13,202
SOL8P(C or B)-4400HVFX	VFX Fountain	1	208-240	8	\$12,321	\$12,448	\$13,092	\$13,301
SOL8P(C or B)-4400HJF	J Series Fountain	1	208-240	8	\$12,583	\$12,717	\$13,396	\$13,612
SOL8P(C or B)-2.3AF	Surface Aerator	2	208-240	8	\$14,560	\$14,733	\$15,079	\$15,278
SOL8P(C or B)-2.3VFX	VFX Fountain	2	208-240	8	\$14,994	\$15,172	\$15,507	\$15,681
SOL8P(C or B)-2.3JF	J Series Fountain	2	208-240	8	\$15,186	\$15,415	\$15,700	\$15,948
ROBUST-AIRE™ PACKAGES (POWER CORD LENGTHS ABOVE DO NOT APPLY)								
SOL4P(C or B)-RA1-PM	Robust-Aire	RA1-PM	120	4	\$9,926			
SOL4P(C or B)-RA2-PM	Robust-Aire	RA2-PM	120	4	\$10,539			
SOL4P(C or B)-RA3-PM	Robust-Aire	RA3-PM	120	4	\$11,237			

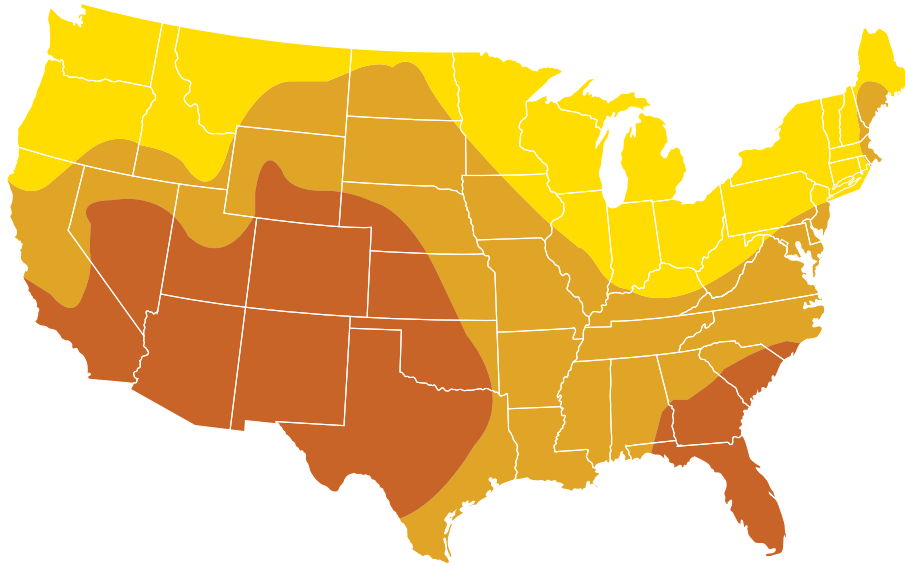
Product Notes:

1. Include "C" in the part number for Solar Only packages, include "B" for Solar + Power Grid Blender packages.
2. Part # is the model combined with cord length (ex. SOL4PC-2400AF050 or SOL4PB-2400AF050). Indicate a "C" or "B" to identify which control panel is needed.
3. Fountain and surface aerator packages include motor unit, float, mooring ropes, unit power cord, and bottom screen.
4. Robust-Aire™ packages include dual loop diffuser assembly, compressor, and compressor mounting option. See pg. 37-41 for details on Robust-Aire packages.
5. PicoCell™ and PicoBlender™ control panels are included in place of Kasco control panels.



Designed for use in applications ranging from farm ponds to industrial settings.

US SOLAR ZONES & DAILY RUN TIME



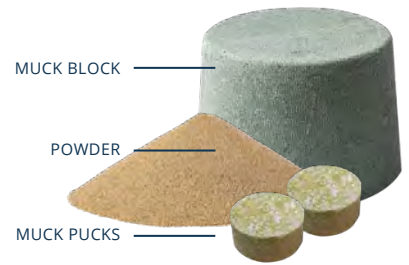
PICOCELL (C) & PICOBLENDER (B) PART #'S	KASCO PRODUCT	HP / SYSTEM	DAILY RUN TIME (AVG HRS)		
			ZONE 3	ZONE 4	ZONE 5
SOL4P(C or B)-2400AF	Surface Aerator	1/2	8.5	9.5	10
SOL4P(C or B)-2400VFX	VFX Fountain	1/2	8.5	9.5	10
SOL6P(C or B)-3400AF	Surface Aerator	3/4	8.5	9.5	10
SOL6P(C or B)-3400VFX	VFX Fountain	3/4	8	9	9.5
SOL6P(C or B)-3400JF	J Series Fountain	3/4	8	9	9.5
SOL8P(C or B)-4400HAF	Surface Aerator	1	8.5	9.5	10
SOL8P(C or B)-4400HVFX	VFX Fountain	1	8.5	9.5	10
SOL8P(C or B)-4400HJF	J Series Fountain	1	8.5	9.5	10
SOL8P(C or B)-2.3AF	Surface Aerator	2	6	8	8.5
SOL8P(C or B)-2.3VFX	VFX Fountain	2	6	8	8.5
SOL8P(C or B)-2.3JF	J Series Fountain	2	6	8	8.5
SOL4P(C or B)-RA1-PM	Robust-Aire™	RA1-PM	8	9	9
SOL4P(C or B)-RA2-PM	Robust-Aire™	RA2-PM	8	9	9
SOL4P(C or B)-RA3-PM	Robust-Aire™	RA3-PM	8	9	9

Run times are annual averages. 1-2 hours less in winter, and 1-2 hours more in summer.

MACRO-ZYME™

BENEFICIAL BACTERIA

Macro-Zyme™ is a safe, non-chemical approach to water quality management. Used to produce a healthy, balanced ecosystem in ponds and lakes, its highly concentrated, unique blend of naturally occurring bacteria and enzymes quickly eliminates sludge and odors. Simply toss it into the water and let it go to work.



QUICK DISSOLVING
POWDER



MUCK PUCK
TABLETS



TIME-RELEASED
MUCK BLOCKS

55° APPLY IN WATER 55° F
DEGREES OR HIGHER



SAFE FOR PEOPLE,
PETS & LIVESTOCK

PART #	DESCRIPTION	CONTENTS TREAT	MSRP
MZ1C	(6) 6 packs of 1 oz. WS bags (case)	Up to 36,000 gallons total	\$104
MZ8	(1) 8 oz. WS bag	8 oz. treats 1/2 acre ft.	\$12.57
MZ8C	(40) 8 oz. WS bags (case)	Up to 20 acre ft.	\$471
MZ25	25 lb. bag of bulk powder in pail (no WS bags)	Up to 25 acre ft.	\$516
MZMP7	Macro-Zyme Muck Pucks - 7 lb. pail with 266 pucks	Up to 10 ft² per puck	\$84.50
MZMB5	Macro-Zyme Muck Block - (1) 6 lb. block	Up to 6 acre ft.	\$78

Product Notes:

1. WS = Water soluble bag
2. One acre foot (1 acre of surface area with 1 ft. of depth) = 325,851 gallons
3. Length (ft.) x Width (ft.) x Avg. water depth (ft.) x 7.48 = gallons
4. (6) 6 packs of 1 oz. WS bags come in retail-ready plastic jars.



BEFORE



Macro-Zyme™ eliminates foul odors and sludge to safely and naturally restore your waterfront.

UNIT MOUNTING OPTIONS

SECURE YOUR KASCO UNIT



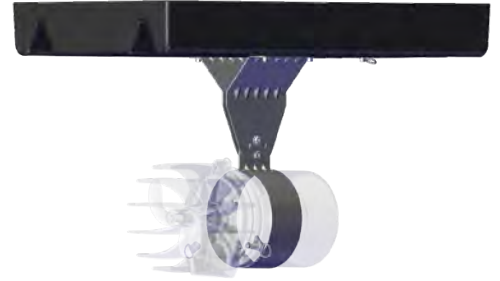
UNIVERSAL MOUNT

- For 1/2 - 1HP units
- NEW - Simple Swivel bracket
- Stainless steel hardware
- Adjust unit depth and angle
- Mount on docks, piers, etc.
- Requires 1 in. / 25 DN nominal threaded or unthreaded pipe*



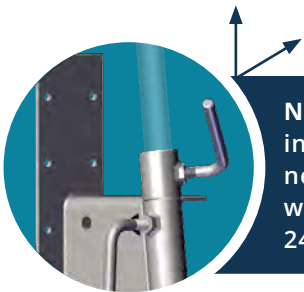
INDUSTRIAL MOUNT

- For 1/2 - 2HP units in harsh areas
- NEW - Simple Swivel bracket
- Stainless steel hardware
- Adjust unit depth and angle
- Mount on docks, piers, etc.
- Requires 1.5 in. / 40 DN nominal threaded or unthreaded pipe*

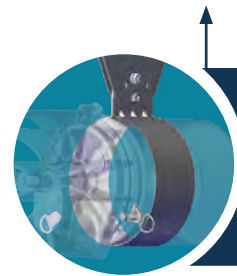


HORIZONTAL FLOAT

- For 1/2 - 1HP units
- Tie-down loops to secure unit
- Stainless steel hardware
- 3 angles of unit orientation
- Power cord strain relief clip
- Well suited for shallow water



NEW - Simple Swivel (patent pending) bracket included on Universal and Industrial Mount Kits. This newly designed bracket allows the unit to influence water flow to desired area. Universal Kits use part # 243478, Industrial Kits use part # 243479.



NEW - Tie-down loops included to easily attach mooring ropes to unit.

PART #	DESCRIPTION	UNITS COMPATIBLE	MSRP
243478 - NEW	Universal Mount with Simple Swivel bracket (patent pending)	1/2 - 1HP units	\$395
243479 - NEW	Industrial Mount with Simple Swivel bracket (patent pending)	1/2 - 2HP units in harsh conditions	\$548
213001	Horizontal Float with tie-down loops	1/2 - 1HP units	\$491

* Pipe is not included and must be supplied by customer.

CONTROL PANELS

Control panels allow energy-saving automatic control of your Kasco unit. Select your desired settings, and the control panel will handle the rest. Kasco control panels are approved and listed to the most stringent UL and CSA standards to deliver the safety and performance you need.



PART #	MODEL #	USE WITH	CONTROL FUNCTION	GROUND FAULT PROTECTION	MSRP
125250	C-25	120V, 1/2-1HP fountains, AquatiClear Circulators and surface aerators	24HR timer and photocell	6 milliamp (human-rated)	\$324
176005	C-85	208-240V, 3/4-2HP fountains and surface aerators	(2) 24HR timers	6 milliamp (human-rated)	\$1,791
176090	C-95	208-240V, 3-5HP fountains and surface aerators	(2) 24HR timers	6 milliamp (human-rated)	\$1,794
176332	C-220	208-240V, 3/4-1HP AquatiClear Circulators 208-240V, 3/4-2HP surface aerators	24HR timer	6 milliamp (human-rated)	\$1,188
176333	C-230	208-240V, 3-5HP surface aerators	24HR timer	6 milliamp (human-rated)	\$1,188
176210	CA-3235	208-240V, 2-5HP three phase surface aerators	24HR timer	30 milliamp (equipment-rated)	\$3,038
176200	CF-3235	208-240V, 2-5HP three phase fountains and surface aerators	(2) 24HR timers	5 milliamp (human-rated)	\$3,867
176204	CF-3075	208-240V, 7-1/2HP three phase fountains	(2) 24HR timers	5 milliamp (human-rated)	\$3,611

Product Notes:

1. The C-25 has one timer to operate the unit and a photocell to operate the lights.
2. The C-85, C-95, CF-3235 and CF-3075 have two timers, one for the unit and one for the lights. These panels do not include a photocell.



ACCESSORIES

Get the most from your Kasco unit through the accessories listed below. From strain reliefs, to protective cord sleeves, to quick disconnects, Kasco has what you need to keep your unit operating at its best.



PART #	DESCRIPTION	MSRP
636400	Optional 3-point strain relief conversion kit for 16-gauge through 10-gauge cords	\$127
636175	Quick disconnect added to 50 ft. or 100 ft. power cord for units <i>(Quick disconnect is already installed on 100 ft. cords for all 1HP (120V), 2HP, 3.1HP, & 5.1HP units)</i>	\$285
636212	Quick disconnect added to power cord for lighting systems <i>(Quick disconnect comes standard on RGBW LED lighting systems)</i>	\$288
840303	3-light kit adapter for 3-piece sectional floats	\$48.62
840306	6-light kit adapter for 3-piece sectional floats	\$411
645315	3/8 in. flex sleeving per foot (for 16,14, and 12-gauge cords) - 50 ft. increments	\$3.01
645317	3/8 in. flex sleeving per foot installed on cord at Kasco - 50 ft. increments	\$4.28
645330	1/2 in. flex sleeving per foot (for 10-gauge cords) - 50 ft. increments	\$3.35
645332	1/2 in. flex sleeving per foot installed on cord at Kasco - 50 ft. increments	\$4.47
645336	1/2 in. and 3/8 in. speed tool for installing flex sleeving	\$16.24
645340	3/4 in. flex sleeving per foot (for 8-gauge cords) - 50 ft. increments	\$4.50
645342	3/4 in. flex sleeving per foot installed on cord at Kasco - 50 ft. increments	\$5.66
645346	3/4 in. speed tool for installing flex sleeving	\$19.62
990690	Industrial Upgrade Option - modify any AquatiClear™ Circulator or surface aerator to use a double-mechanical seal and stainless steel domed top	\$615
990926	Food grade mineral oil option	Contact Kaso



KASCO DE-ICERS

THE #1 SELLING DE-ICER IN THE WORLD



DE-ICERS

PROTECT YOUR WATERFRONT FROM ICE DAMAGE

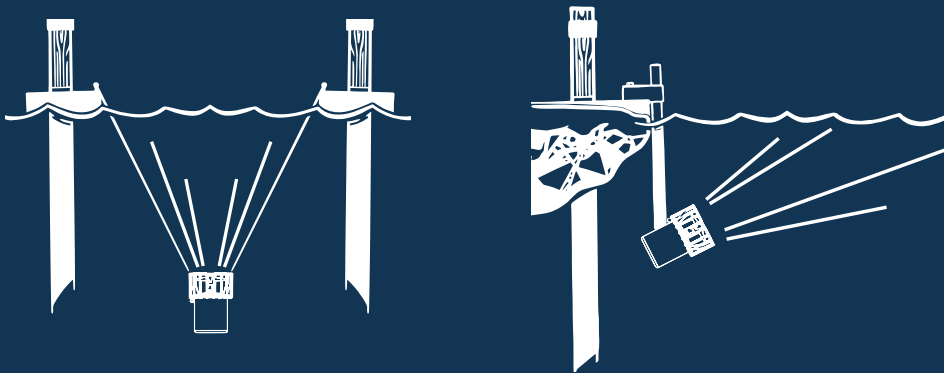
By pushing warmer water up, Kasco De-icers create an opening at the water's surface, keeping boats and docks safe from damaging ice buildup.

Kasco De-icers create more thrust than any other product on the market. More thrust means more open water to better protect your property.

- Includes (2) 20 ft. suspension ropes
- Mount with ropes, Universal or Industrial Mount Kits
- Optional control panels for automatic time and temperature settings
- Offered as 120V and 208-240V
- ETL Listed to CSA and UL Standards

HP 1/2, 3/4, & 1HP
AVAILABLE

 3 YEAR
WARRANTY



AVAILABLE TO SPECIALTY DISTRIBUTION. CONTACT KASCO FOR DETAILS.





CERTISAFE



THE MOST POWERFUL ACTIVE TANK MIXER

CERTISAFE™ TANK MIXER


NSF / ANSI 61 & 372 CERTIFIED TANK MIXER

The CertiSafe™ Tank Mixer blends drinking water in tanks and reservoirs to create a homogeneous environment in chemical concentration and temperature, improving overall water quality.

These energy-efficient potable water mixing systems can be mounted in a variety of ways and are easy to install and maintain. Our team of experts can provide system recommendations for your unique application to improve water quality from the tank to the tap.

- 120V, 208-240V, plus solar powered options
- Floor Mount, Pipe Mount or Suspended Mount option
- Optional control panels monitor and control unit
- NSF / ANSI 61 & 372 Certified
- ETL Listed to CSA and UL Standards

HP 1/2, 3/4, 1 & 2HP
AVAILABLE

 3 YEAR
WARRANTY
OPTIONAL 5 YEAR
EXTENDED WARRANTY



AVAILABLE TO SPECIALTY DISTRIBUTION. CONTACT KASCO FOR DETAILS.

**WARRANTY PERIODS
(INCLUDES CONTROL PANEL):**

J SERIES FOUNTAINS

- 3/4 & 1HP: 2 yrs
- 2HP: 3 yrs
- 3, 5 & 7-1/2HP: 5 yrs

VFX FOUNTAINS

- 1/2, 3/4 & 1HP: 2 yrs
- 2 & 5HP: 3 yrs

SURFACE AERATORS

- 1/2, 3/4 & 1HP: 2 yrs
- 2, 3 & 5HP: 3 yrs

WATERGLOW LIGHTING

- Universal Lighting: 2 yrs
- RGB LED: 2 yrs
- Composite LED: 2 yrs
- Stainless Steel LED: 3 yrs
- RGBW LED: 3 yrs

AQUATICLEAR™ CIRCULATORS

- 1/2, 3/4 & 1HP: 2 yrs

ROBUST-AIRE™

- Compressor: 3 yrs
- Tubing: 15 yrs
- Diffuser: Lifetime
- Cabinet: Lifetime

SOLAR

- Kasco Unit: Standard Kasco Warranty
- PicoCell™ or PicoBlender™ Controller: 1 yr
- Solar Panels: 10 yrs

EXTENDED WARRANTIES
AVAILABLE. SEE DETAILS.

WARRANTY

STANDARD WARRANTY:

Kasco Marine, Inc. warrants products to be free from defects in material or workmanship under normal use and service. This warranty excludes damage to the equipment from improper handling or installation as well as damage caused by environmental factors (examples include but are not limited to: cuts in or crushing of the power cord, damage to mooring lines and ropes, foreign objects causing damage to props or motor shafts, and improper power feeds). The Kasco Marine, Inc. obligation under this warranty is limited to replacing or repairing, free of charge, any defective part within the warranty period.

All units sent back to the factory or authorized repair center should be accompanied by the repair form, found at kascomarine.com. Customer is responsible to pay shipping charges.

WARRANTY IS VOID IF:

1. The product is not maintained according to the maintenance recommendations supplied in owner's manual.
2. The product is returned for repair without the power cord (cuts in the power cord and field splices are not covered under warranty).
3. The unit, control box, or power cord are altered in any way from original shipment.
4. The product is not used with a GFCI-protected outlet, or not used with the supplied GFCI control panel.
5. The product is damaged by unauthorized tampering.
6. The sacrificial anode shows significant deterioration.

EXTENDED WARRANTY:

The extended warranty is an additional 2 years beyond the 3 year warranty.

- The unit and the extended warranty must be ordered at the same time and on the same P.O. with the warranty as its own line item.
- Standard warranty requirements apply (regular cleaning, no unauthorized tampering, etc.) - no additional maintenance required.
- Unit must be sold with a control panel.
- Coverage includes unit, control panel and power cord.
- ELIGIBLE PRODUCTS:

- a. 2HP J Series Fountains
- b. 2 & 5HP VFX Fountains
- c. 2, 3 & 5HP Surface Aerators

PART #	HP	MSRP
EW2F	2	\$700
EW3F	3	\$800
EW4F	5	\$975

MAP, PRODUCT RETURN & REPAIR

MAP (MINIMUM ADVERTISED PRICING):

MAP on fountains, surface aerators, AquatiClear™ Circulators, WaterGlow Lighting, Robust-Aire™ and Macro-Zyme™ is full retail.

Prices are subject to change without notice and are not guaranteed for the entire year.

NEW OR UNUSED PRODUCT RETURN:

If an item has not entered the water, it can be returned to Kasco:

1. Contact Kasco to receive an RMA number and RMA form.
2. Package the item(s) adequately (original packaging preferred) and return to Kasco with completed RMA form and RMA number on the shipping label or written on the box.

IMPORTANT:

- 10% restocking fee will be applied to all returns.
- An item will not be accepted for return if it has been in the water.
- Kasco will not reimburse for product that was damaged during shipment.
- Only new, clean and unused items may be returned for credit.
- Items may not be returned after 6 months from the time of purchase.

REPAIR:

Equipment can be shipped to Kasco or an authorized service center for a repair estimate. Contact us if you'd like to find an authorized repair center near you.

Kasco aims to provide a free cost estimate within 48 hours. After customer approval, the repair can be made in just a few days.

- Please include upper pump housing or wire cage for aerators and de-icers.
- Kasco is not responsible for shipping damage from customer to Kasco.
- Do not send floats. Kasco will charge \$90 for float disassembly and cleaning.
- It is the responsibility of the customer to ship and pay freight to Kasco.

SHIPPING

DAMAGED SHIPMENTS:

Please thoroughly inspect incoming shipments prior to accepting. Once a shipment is accepted by the receiver, it is difficult, if not impossible, to get the freight company to pay for damage. If boxes have been damaged, opened, repackaged, a pallet re-strapped, etc., it is best to simply refuse the delivery. This ensures the carrier cannot blame the receiver for the damage and that the shipment gets returned to Kasco. In the unfortunate event of damage or shortage to your order, please notify customer service and make a note on any shipping-related documents. Photos of the packaging and product will also help our customer service team expedite your claim and find the fastest resolution.

SHIPPING

FREIGHT QUOTES:

Please email freight quotes to sales@kascomarine.com and include the below:

- Shipping address
- Commercial or residential
- Offload or lift gate requirements
- Delivery notification contact info

NOTE: Some addresses are extended delivery areas and additional charges may apply. Quotes are estimates, valid for 30 days and may vary.



DISTRIBUTOR TOOLS



KASCO WEBSITE



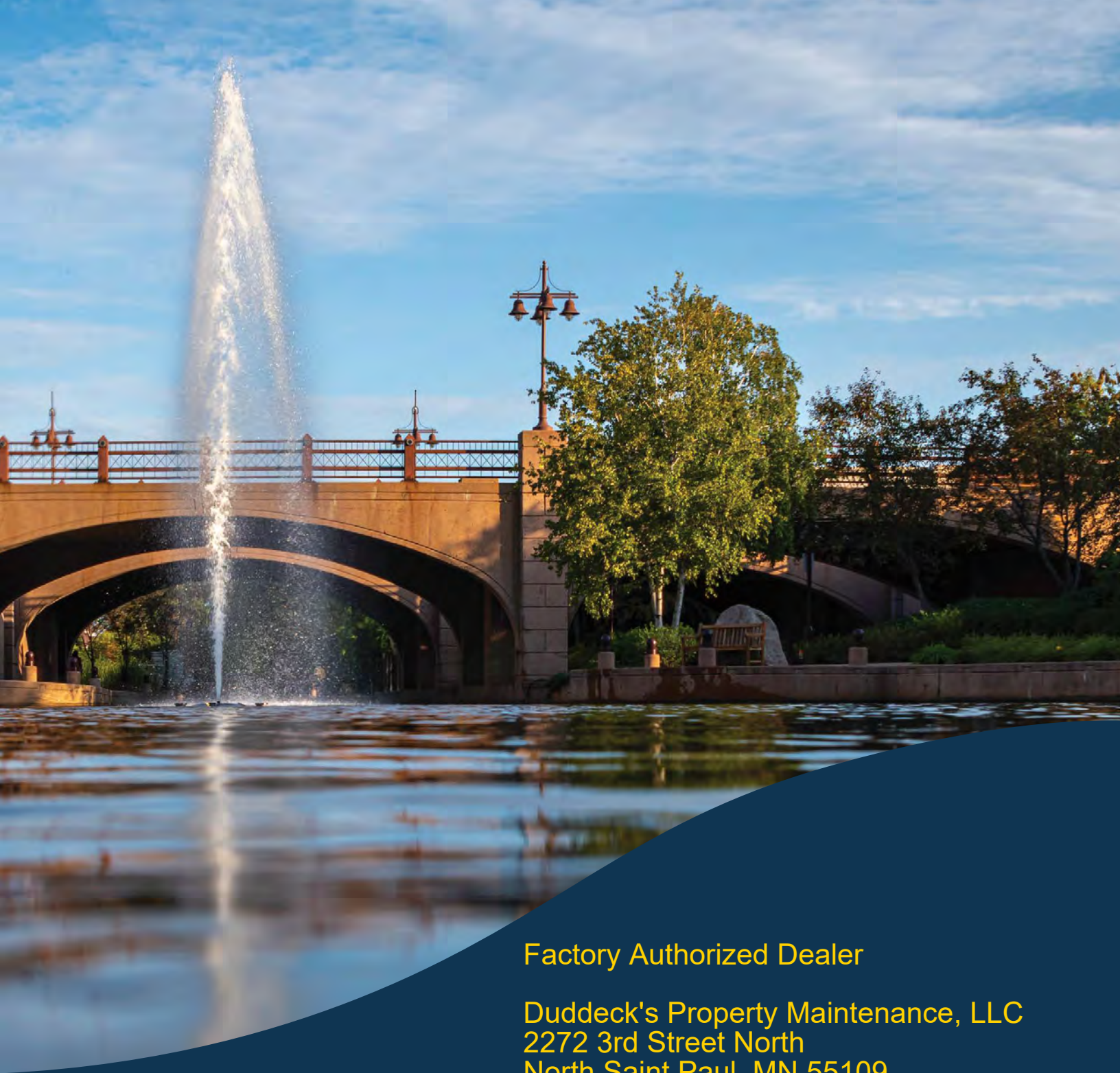
DISTRIBUTOR PORTAL



ONLINE TRAINING



QUALIFIED LEAD ROUTING



Factory Authorized Dealer

Duddeck's Property Maintenance, LLC
2272 3rd Street North
North Saint Paul, MN 55109
651-300-0132
dpm.duddeck@gmail.com

MOVING WATER FORWARD SINCE 1968

kascomarine.com | 715.262.4488 | sales@kascomarine.com

800 Deere Road, Prescott, WI U.S.A. 54021